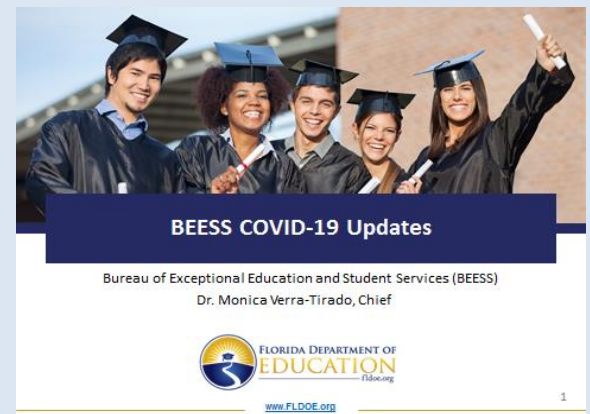


Guidance Related to Evaluations and Services for Children with IEP's.

BEES COVID-19 Updates (Bureau of Exceptional Education and Student Services, Dr. Monica Vierra-Tirado, Chief

Sources of Excerpts and Links:

- [FL DOE Q&A Guidance](#)
- For additional information: [Ideas and Resources for Evaluations, Transition, and Family Collaboration](#)



Important Notes for Pre-K:

Services:

Each student with an IEP, 504 plan or Gifted Educational Plan (EP), should be **included in the school district's instructional continuity plan** to the same extent as all other students.

- May include virtual instruction, as well as virtual specialized instruction and related services to the extent practical.
- All areas of the student's IEP, 504 or EP must be considered.

Evaluations and Meetings:

- Any and all required evaluations, IEP meetings etc. **may also be held virtually** to the extent practical.
- If there is any type of delay, the nature and extent of the delay and a plan to move as quickly as possible to prevent further delay **should be documented**.

Excerpts taken from the following slides:



Services for Students with IEPs, 504 Plans or Gifted Plans

Each student with an IEP, 504 plan or Gifted Educational Plan (EP), should be included in the school district's instructional continuity plan to the same extent as all other students.

- May include virtual instruction, as well as virtual specialized instruction and related services to the extent practical.
- All areas of the student's IEP, 504 or EP must be considered.
- Any and all required evaluations, IEP meetings etc. may also be held virtually to the extent practical.
- If there is any type of delay, the nature and extent of the delay and a plan to move as quickly as possible to prevent further delay should be documented.
- FDOE Q&A March 19, 2020
- <http://www.fldoe.org/core/fileparse.php/19861/urlt/FDOE-COVID-QA1.pdf>

[www.FLDOE.org](http://www.fldoe.org)

2



Services for Students with IEPs or 504 Plans

- IEP and 504 teams should monitor each student's progress and determine what, if any, remediation may be needed upon return to the student's placement.
- Questions and Answers on Providing Services to Children with Disabilities During the Coronavirus Disease 2019 Outbreak <https://www2.ed.gov/policy/speced/guid/idea/memosdcltrs/qa-covid-19-03-12-2020.pdf>
- Fact Sheet Protecting Students' Civil Rights During COVID-19 Response <https://www.ed.gov/news/press-releases/us-department-education-releases-webinar-fact-sheet-protecting-students-civil-rights-during-covid-19-response>

[www.FLDOE.org](http://www.fldoe.org)

3



For the latest COVID-19 Updates

<http://www.fldoe.org/em-response/index.shtml>