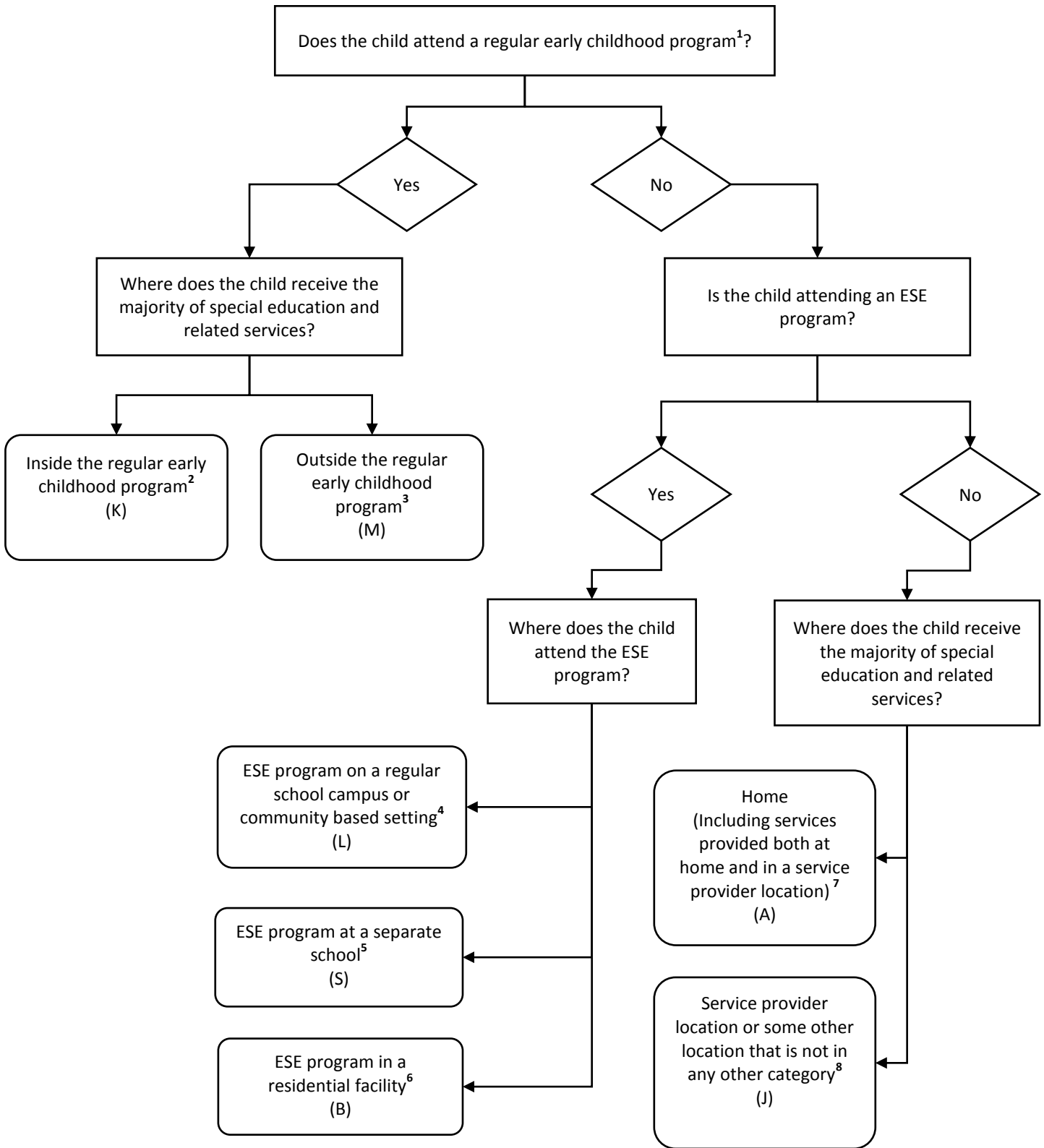


**Decision Tree for Coding Educational Environments:
Children with Disabilities Ages 3 through 5**



Note: Definitions for the terms and phrases noted by superscripts (¹⁻⁸) are provided on the following page.

Definitions for Educational Environments: Children with Disabilities Ages 3 through 5

1. **Regular early childhood program:** An early childhood program that includes a majority (at least 50 percent) of nondisabled children (i.e., children not on IEPs). This category includes, but is not limited to:
 - Head Start
 - Kindergarten
 - Preschool class offered to an eligible pre-kindergarten population by the public school system (e.g., VPK) or private kindergartens and preschools
 - Group child development center or child care
2. **K – Inside the regular early childhood program:** Children with disabilities attending an early childhood program that includes 50 percent or more nondisabled children and who are receiving the majority of special education and related services **inside** the early childhood program setting. Include any child attending an early childhood program or kindergarten with 50 percent or more nondisabled children for any portion of the week who gets the majority of special education and related services in that program. Attendance at an early childhood program need not be funded by IDEA, Part B funds.
3. **M – Outside the regular early childhood program:** Children with disabilities attending an early childhood program that includes 50 percent or more nondisabled children and who are receiving the majority of special education and related services **outside** the early childhood program setting. Include any child attending an early childhood program or kindergarten with 50 percent or more nondisabled children for any portion of the week who gets the majority of special education and related services outside of that program (such as pullout services). Attendance at an early childhood program need not be funded by IDEA, Part B funds.
4. **L – Regular school campus or community based setting:** Children with disabilities attending an early childhood program or kindergarten that includes less than 50 percent nondisabled children in a regular school building, in a portable building outside a regular school building, in a community-based setting such as a child care facility, or in a hospital facility on an outpatient basis. Examples of community based settings in which an ESE program can be located include Head Start, private preschools, VPK programs, and group child care settings. Attendance at an early childhood program need not be funded by IDEA, Part B funds.
5. **S – Separate School** – Public or private day school designed specifically for children with disabilities.
6. **B – Residential facility** – Children with disabilities attending a publicly or privately operated residential school or residential medical facility on an inpatient basis.
7. **A – Home** – Children with disabilities who receive the majority of their special education and related services in the principal residence of the child's family or caregivers, and who attend neither a regular early childhood program nor an ESE program provided in a separate class, separate school, or residential facility. Include children who receive special education and related services both at home and in some other location.
8. **J – Service Provider** – Children with disabilities who receive the majority of their special education and related service from a service provider or some other location that is not in any other category, and who attended neither a regular early childhood program nor an ESE program provided in a separate class, separate school, or residential facility. For example, this category may include, but is not limited to, speech therapy provided in a private clinician's office; a clinician's office located in a school building; or a hospital or medical facility, if the services are provided on an outpatient basis.

Definitions adapted from *OSEP IDEA, Part B Data Dictionary (Revised, Data Accountability Center (January, 2013), Westat, Rockville, MD; and FLDOE Automated Student Information System 2012-13, Exceptional Student, IDEA Educational Environments*, retrieved from http://www.fldoe.org/eias/dataweb/student_1213.asp#E.